

Алматы (7273)495-231  
 Ангарск (3955)60-70-56  
 Архангельск (8182)63-90-72  
 Астрахань (8512)99-46-04  
 Барнаул (3852)73-04-60  
 Белгород (4722)40-23-64  
 Благовещенск (4162)22-76-07  
 Брянск (4832)59-03-52  
 Владивосток (423)249-28-31  
 Владикавказ (8672)28-90-48  
 Владимир (4922)49-43-18  
 Волгоград (844)278-03-48  
 Вологда (8172)26-41-59  
 Воронеж (473)204-51-73  
 Екатеринбург (343)384-55-89  
 Иваново (4932)77-34-06  
 Ижевск (3412)26-03-58  
 Иркутск (395)279-98-46  
 Казань (843)206-01-48

Калининград (4012)72-03-81  
 Калуга (4842)92-23-67  
 Кемерово (3842)65-04-62  
 Киров (8332)68-02-04  
 Коломна (4966)23-41-49  
 Кострома (4942)77-07-48  
 Краснодар (861)203-40-90  
 Красноярск (391)204-63-61  
 Курск (4712)77-13-04  
 Курган (3522)50-90-47  
 Липецк (4742)52-20-81  
 Магнитогорск (3519)55-03-13  
 Москва (495)268-04-70  
 Мурманск (8152)59-64-93  
 Набережные Челны (8552)20-53-41  
 Нижний Новгород (831)429-08-12  
 Новокузнецк (3843)20-46-81  
 Ноябрьск (3496)41-32-12  
 Новосибирск (383)227-86-73

Омск (3812)21-46-40  
 Орел (4862)44-53-42  
 Оренбург (3532)37-68-04  
 Пенза (8412)22-31-16  
 Петрозаводск (8142)55-98-37  
 Псков (8112)59-10-37  
 Пермь (342)205-81-47  
 Ростов-на-Дону (863)308-18-15  
 Рязань (4912)46-61-64  
 Самара (846)206-03-16  
 Саранск (8342)22-96-24  
 Санкт-Петербург (812)-309-46-40  
 Саратов (845)249-38-78  
 Севастополь (8692)22-31-93  
 Симферополь (3652)67-13-56  
 Смоленск (4812)29-41-54  
 Сочи (862)225-72-31  
 Ставрополь (8652)20-65-13  
 Сургут (3462)77-98-35

Сыктывкар (8212)25-95-17  
 Тамбов (4752)50-40-97  
 Тверь (4822)63-31-35  
 Тольятти (8482)63-91-07  
 Томск (3822)98-41-53  
 Тула (4872)33-79-87  
 Тюмень (3452)66-21-18  
 Ульяновск (8422)24-23-59  
 Улан-Удэ (3012)59-97-51  
 Уфа (347)229-48-12  
 Хабаровск (4212)92-98-04  
 Чебоксары (8352)28-53-07  
 Челябинск (351)202-03-61  
 Череповец (8202)49-02-64  
 Чита (3022)38-34-83  
 Якутск (4112)23-90-97  
 Ярославль (4852)69-52-93

Россия +7(495)268-04-70

Казахстан +7(7172)727-132

Киргизия +996(312)96-26-47

Эл. почта: [sao@nt-rt.ru](mailto:sao@nt-rt.ru) || Сайт: <https://laser.nt-rt.ru>

## Silicon Avalanche Photodiode SAE-Series (NIR-Enhanced)

### Description

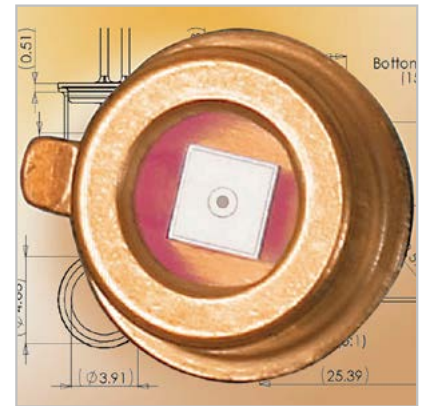
The SAE230NS and SAE500NS epitaxial avalanche photodiodes are general purpose APDs with high responsivity and extremely fast rise and fall times through out the 550 to 1050 nm wavelength range. The responsivity is optimised for 850 nm – 900 nm for use in rangefinding. A variety of package options is available.

### Features

- High quantum efficiency
- Low noise, high speed
- Multiplication gain,  $M > 100$  available
- 230  $\mu\text{m}$  and 500  $\mu\text{m}$  diameter active area
- Gradual multiplication curve
- Wide operating temperature range

### Applications

- Rangefinding
- Optical communication systems



### Generic Characteristics at $T_a = 25\text{ }^\circ\text{C}$

	SAE230NX			SAE500NX			Units
	Min	Typ	Max	Min	Typ	Max	
Wavelength range	550		1050	550		1050	nm
Peak sensitivity		850			850		nm
Diameter		230			500		$\mu\text{m}$

### Absolute Maximum Ratings

	SAE230NX		SAE500NX		Units
	Min	Max	Min	Max	
Storage temperature	-55	100	-55	100	°C
Operating temperature*	-40	85	-40	85	°C
Reverse current Peak value (CW operation)		200		200	µA
Reverse current Peak value (1 sec duration)		1		1	mA
Forward current $I_F$ at 21 °C average value (CW operation)		5		5	mA
Forward current $I_F$ at 21 °C Peak value (1 sec duration)		50		50	mA
Max. total power dissipation		60		60	mW
Soldering (for 15 sec.)		260		260	°C

\* Extended operating temperature range possible for special design considerations

### Electrical Characteristics, $T_a = 25\text{ °C}$ , $M = 100$

	SAE230NX			SAE500NX			Units
	Min	Typ	Max	Min	Typ	Max	
Breakdown voltage @ $I_d = 10\text{ µA}$	150	230	300	150	230	300	Volt
Responsivity @ 905 nm		45			45		A/W
$V_{br}$ temperature coefficient	0.75	0.9	1.0	0.75	0.9	1.0	V/°C
Dark current		0.5	3.0		1.0	5.0	nA
Noise current		0.2	0.5		0.2	0.5	pA/ sqrtHz
Capacitance		1.0	1.5		2.0	3.0	pF
Rise time @ $M = 100$		500			500		psec

Fig. 1: Spectral Response (@ M = 100)

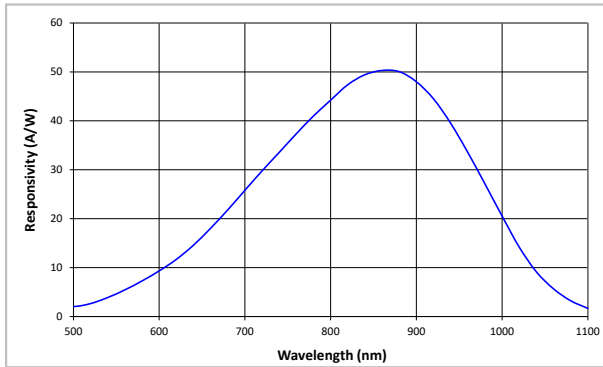


Fig. 2: Quantum Efficiency vs. Wavelength

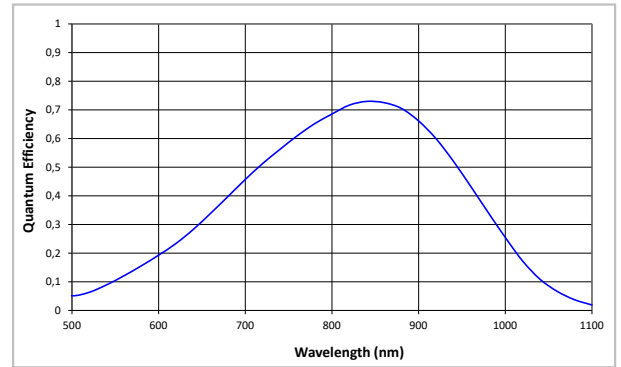


Fig. 3: Typical Dark Current Characteristics

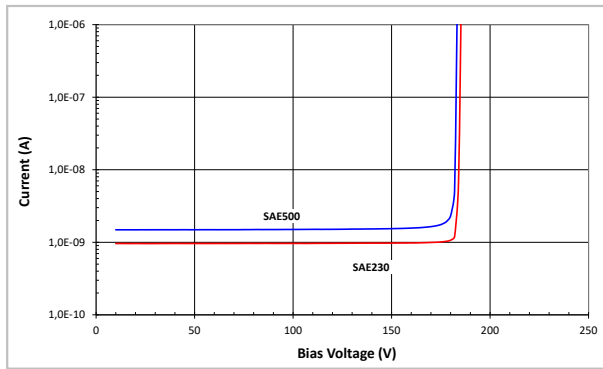


Fig. 4: Dark Current - Voltage characteristics

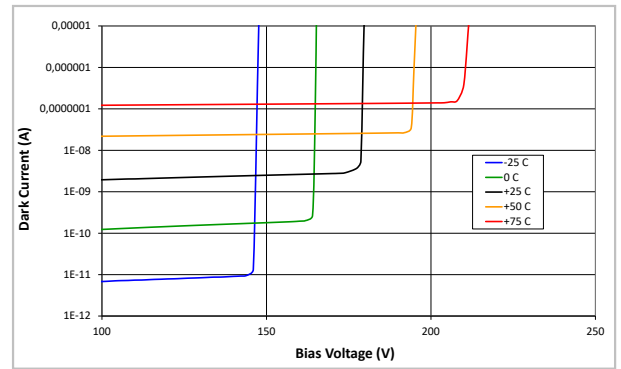


Fig. 5: Gain - Voltage Characteristics

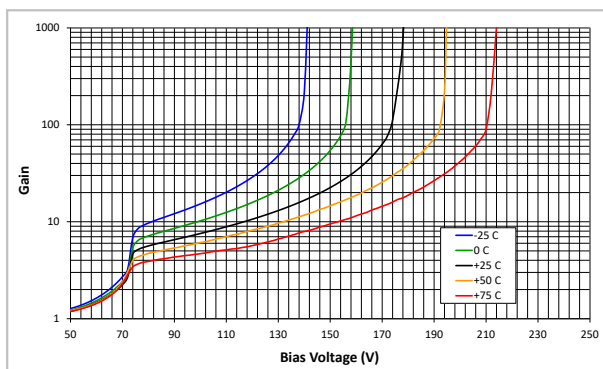


Fig. 5: Capacitance vs. Reverse Voltage

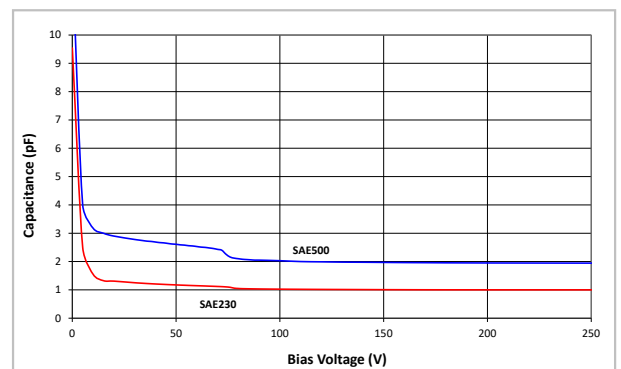


Fig. 7: Typical APD Noise Density as a Function of Gain

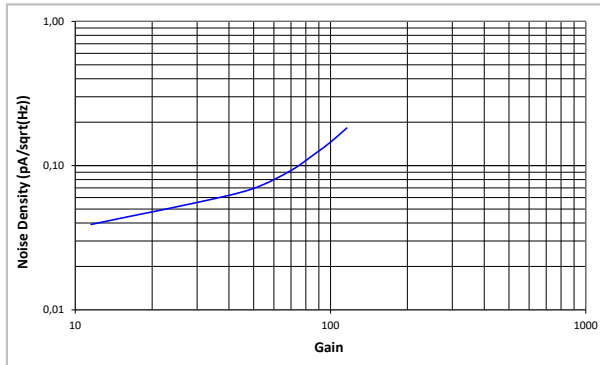
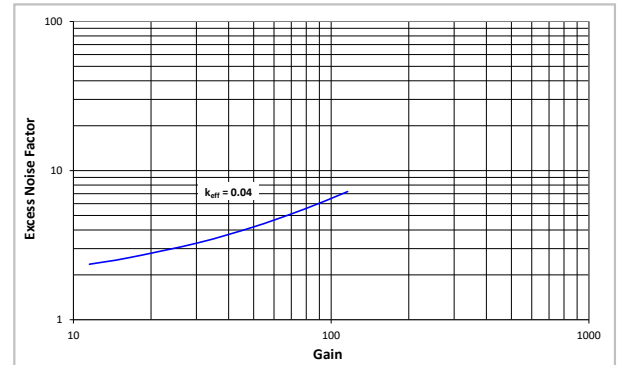
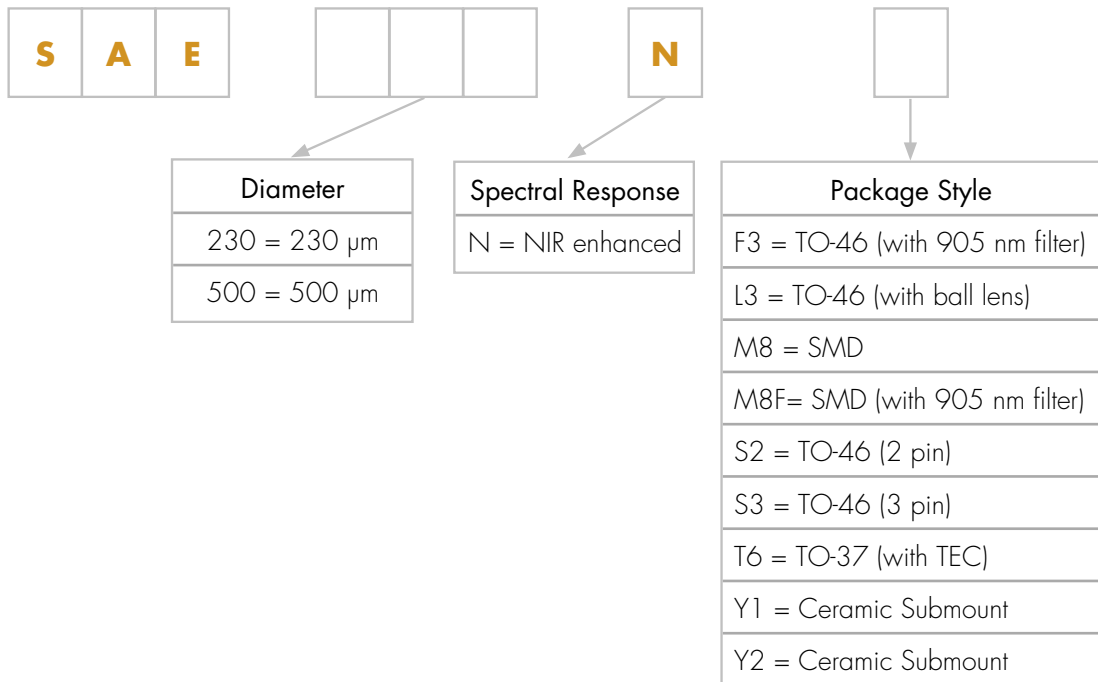


Fig. 8: Excess Noise Factor

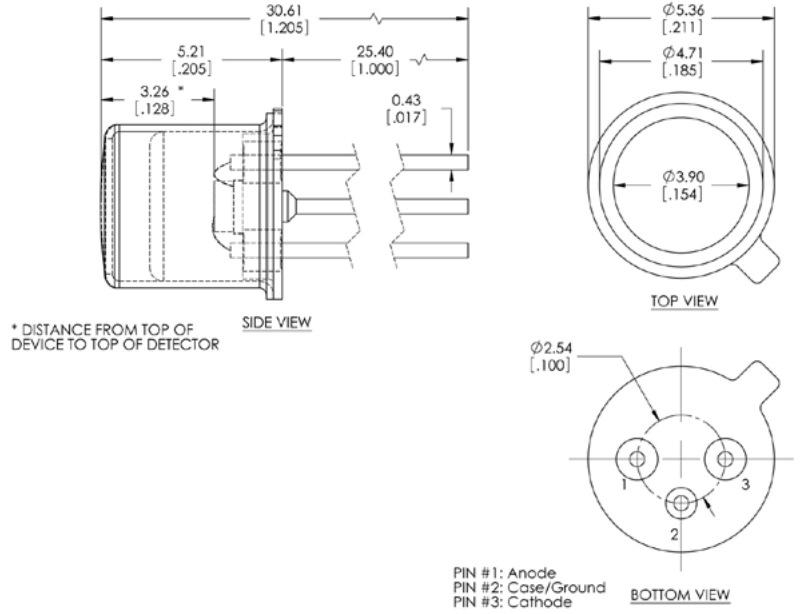


### Product Number Designations

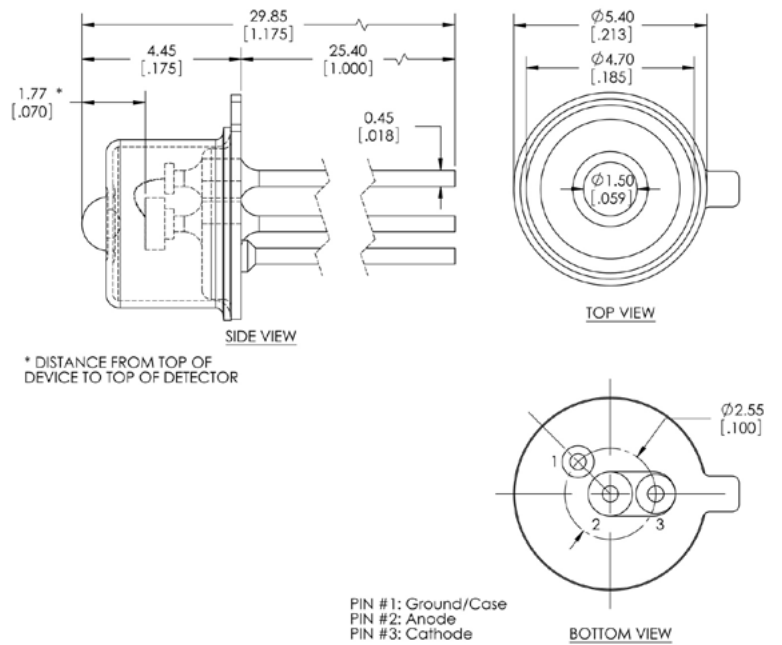


## Package Drawings

### Package F3 TO-46 (with filter)



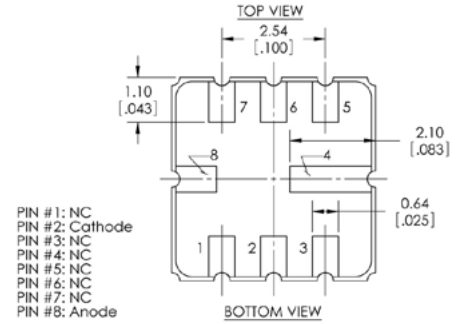
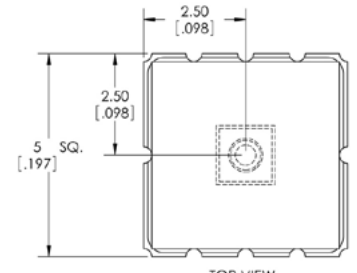
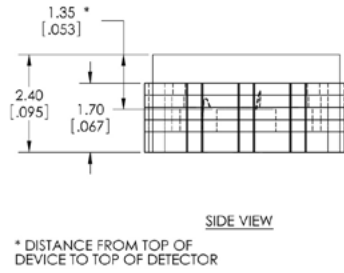
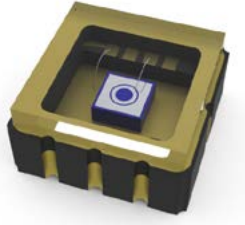
### Package L3 TO-46 (with ball lens)



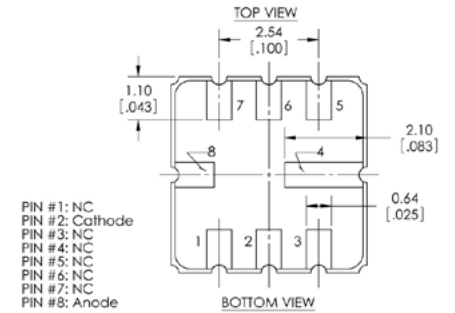
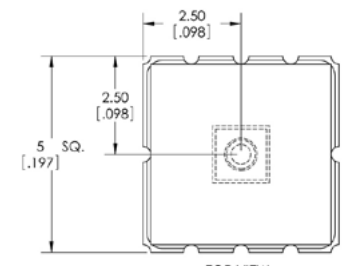
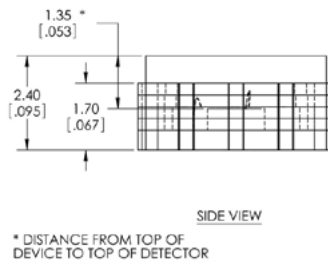
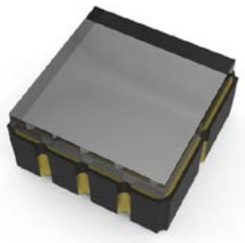
Silicon Avalanche Photodiode SAE-Series  
(NIR-Enhanced)



Package M8 SMD



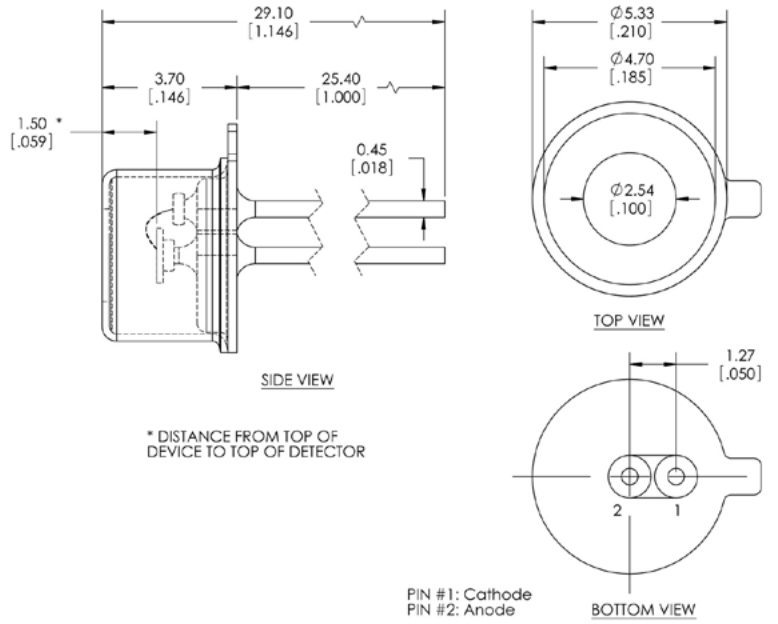
Package M8F SMD with 905 nm filter



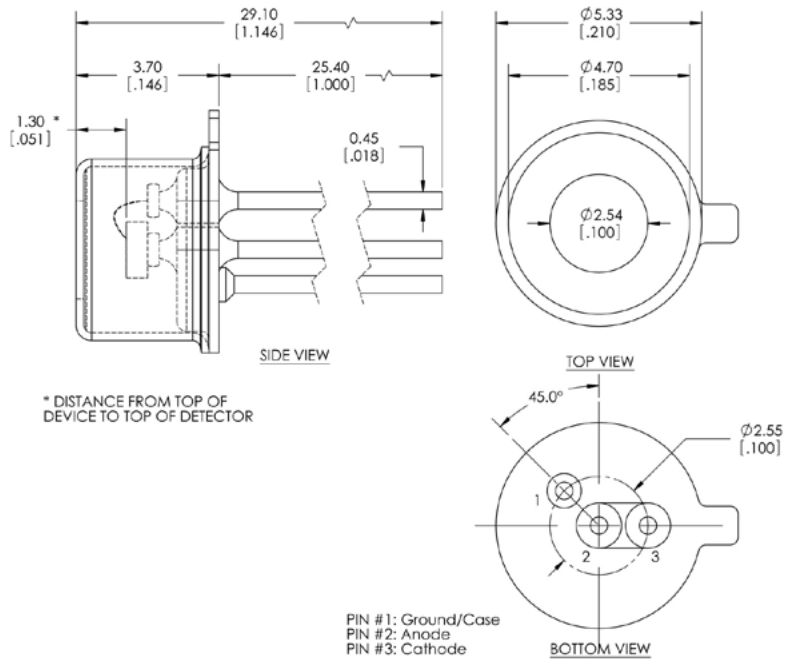
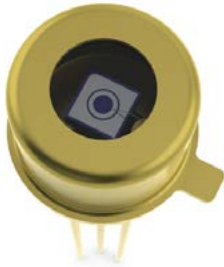
Silicon Avalanche Photodiode SAE-Series  
(NIR-Enhanced)



Package S2 TO-46 (2-pin)



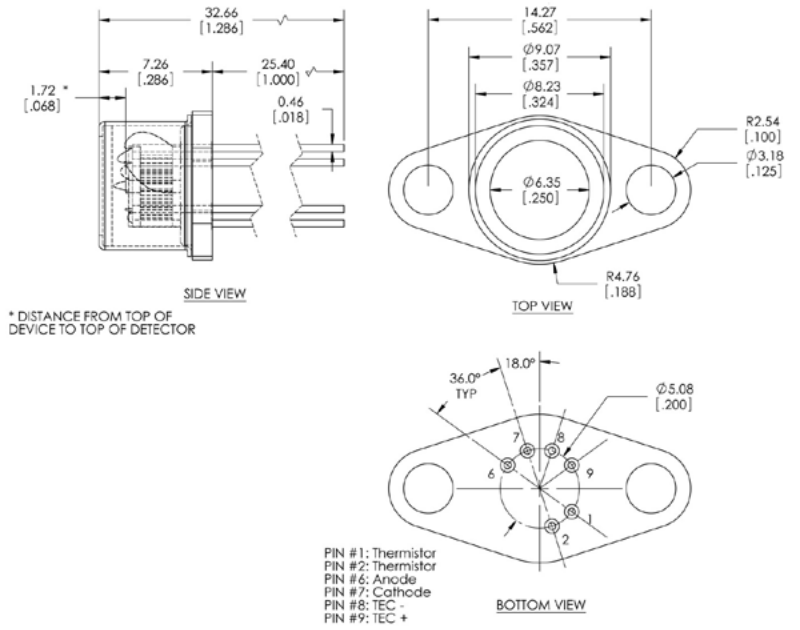
Package S3 TO-46 (3 pin)



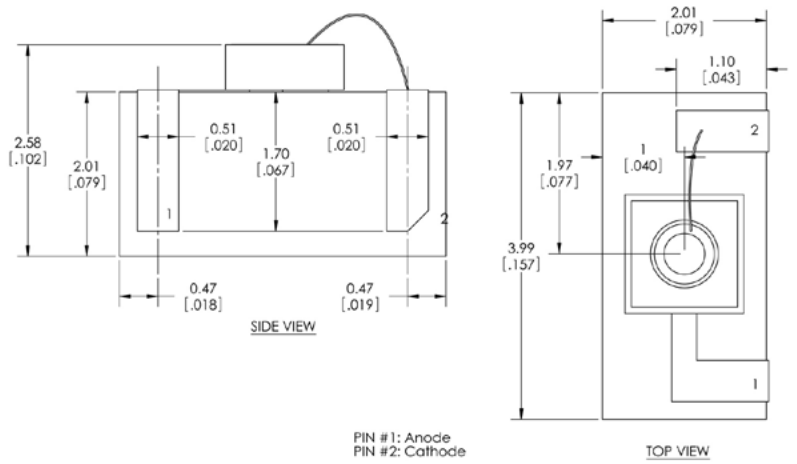
Silicon Avalanche Photodiode SAE-Series  
(NIR-Enhanced)



Package T6 TO-37 (with TEC)

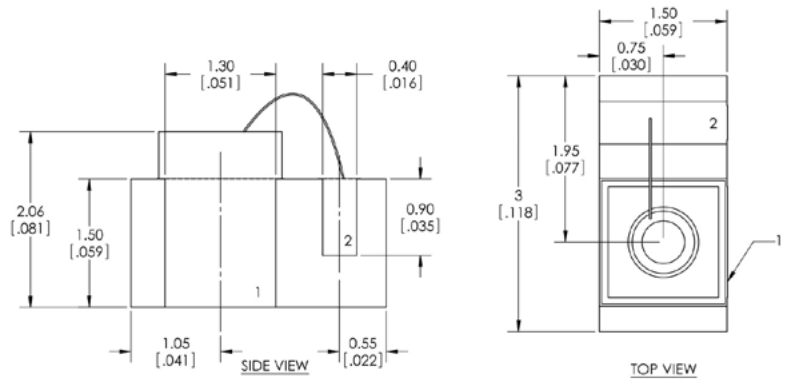


Package Y1 Ceramic Submount





Package Y2 Ceramic Submount



### Product Changes

LASER COMPONENTS reserves the right to make changes to the product(s) or information contained herein without notice.

No liability is assumed as a result of their use or application.

### Ordering Information

Products can be ordered directly from LASER COMPONENTS or its representatives. For a complete listing of representatives, visit our website at

Custom designed products are available on request.

## По вопросам продаж и продукции обращайтесь:

Алматы (7273)495-231  
Ангарск (3955)60-70-56  
Архангельск (8182)63-90-72  
Астрахань (8512)99-46-04  
Барнаул (3852)73-04-60  
Белгород (4722)40-23-64  
Благовещенск (4162)22-76-07  
Брянск (4832)59-03-52  
Владивосток (423)249-28-31  
Владикавказ (8672)28-90-48  
Владимир (4922)49-43-18  
Волгоград (844)278-03-48  
Вологда (8172)26-41-59  
Воронеж (473)204-51-73  
Екатеринбург (343)384-55-89  
Иваново (4932)77-34-06  
Ижевск (3412)26-03-58  
Иркутск (395)279-98-46  
Казань (843)206-01-48

Калининград (4012)72-03-81  
Калуга (4842)92-23-67  
Кемерово (3842)65-04-62  
Киров (8332)68-02-04  
Коломна (4966)23-41-49  
Кострома (4942)77-07-48  
Краснодар (861)203-40-90  
Красноярск (391)204-63-61  
Курск (4712)77-13-04  
Курган (3522)50-90-47  
Липецк (4742)52-20-81  
Магнитогорск (3519)55-03-13  
Москва (495)268-04-70  
Мурманск (8152)59-64-93  
Набережные Челны (8552)20-53-41  
Нижний Новгород (831)429-08-12  
Новокузнецк (3843)20-46-81  
Ноябрьск (3496)41-32-12  
Новосибирск (383)227-86-73

Омск (3812)21-46-40  
Орел (4862)44-53-42  
Оренбург (3532)37-68-04  
Пенза (8412)22-31-16  
Петрозаводск (8142)55-98-37  
Псков (8112)59-10-37  
Пермь (342)205-81-47  
Ростов-на-Дону (863)308-18-15  
Рязань (4912)46-61-64  
Самара (846)206-03-16  
Саранск (8342)22-96-24  
Санкт-Петербург (812)-309-46-40  
Саратов (845)249-38-78  
Севастополь (8692)22-31-93  
Симферополь (3652)67-13-56  
Смоленск (4812)29-41-54  
Сочи (862)225-72-31  
Ставрополь (8652)20-65-13  
Сургут (3462)77-98-35

Сыктывкар (8212)25-95-17  
Тамбов (4752)50-40-97  
Тверь (4822)63-31-35  
Тольятти (8482)63-91-07  
Томск (3822)98-41-53  
Тула (4872)33-79-87  
Тюмень (3452)66-21-18  
Ульяновск (8422)24-23-59  
Улан-Удэ (3012)59-97-51  
Уфа (347)229-48-12  
Хабаровск (4212)92-98-04  
Чебоксары (8352)28-53-07  
Челябинск (351)202-03-61  
Череповец (8202)49-02-64  
Чита (3022)38-34-83  
Якутск (4112)23-90-97  
Ярославль (4852)69-52-93